

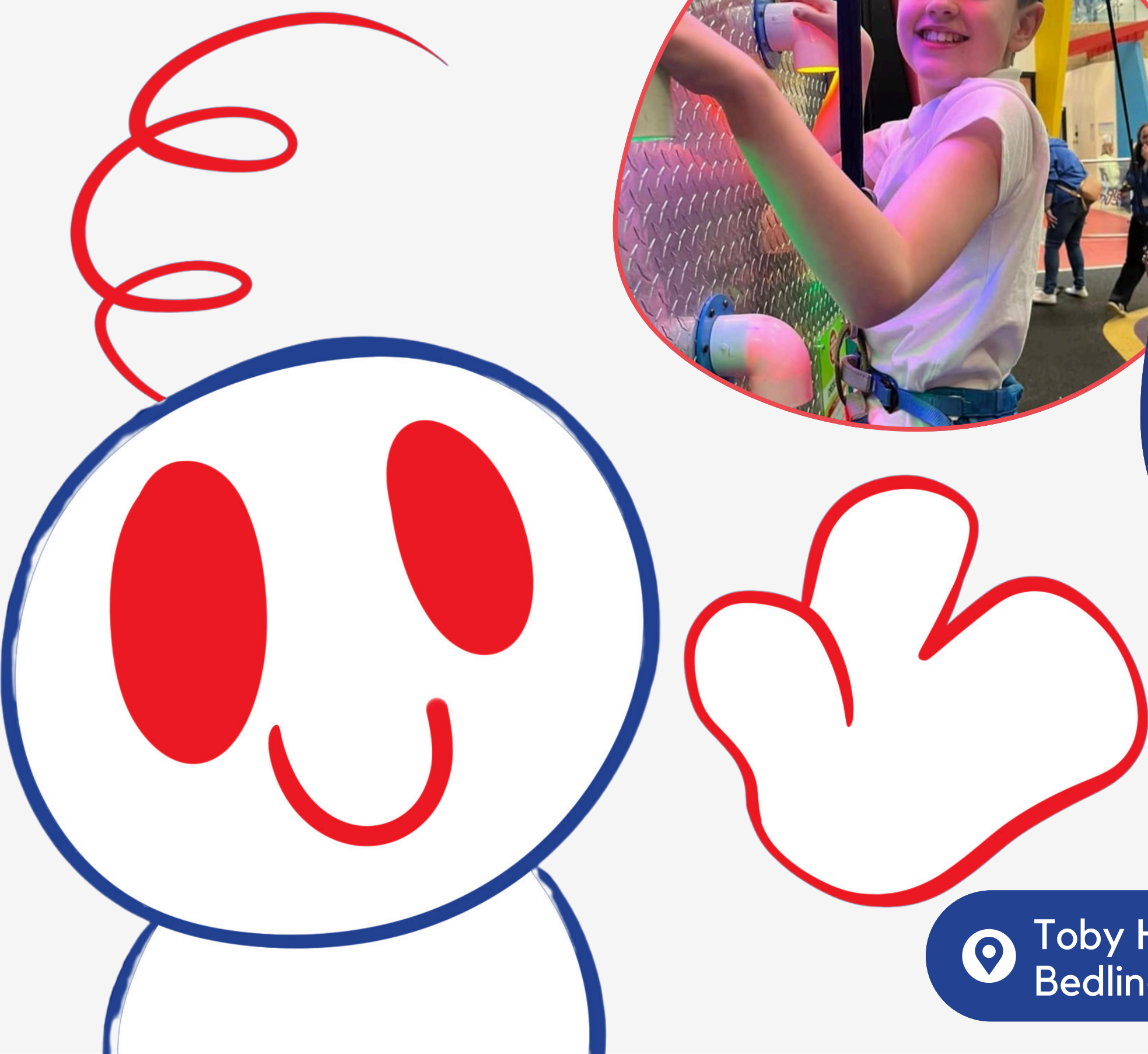
The Toby Henderson Trust

OPEN DAY AT TOBY HOUSE

Thursday
12th June
10am-2pm

The Toby Henderson Trust is delighted to welcome parents, carers, family members and professionals to come along to learn more about us and how we support autistic children, young people, adults and their families and carers in the North East of England.

This is the ideal opportunity to meet & chat with the team and find out about all of the services we offer from Toby House. So please come along & enjoy some refreshments over lunch & explore the magic that is Toby House. There's no need to book, just drop in.



Toby House, Earth Balance,
Bedlington, Northumberland, NE22 7AD